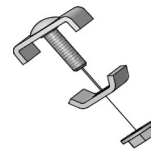
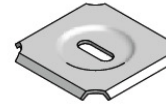


PART NUMBER	WIDTH	WT. per pc.	FILL	LOAD lbs/ft	SPLICE quantity
WBT2X4	4"	7 lbs	108	45	2
WBT2X6	6"	9 lbs	163	50	4
WBT2X8	8"	10.5 lbs	218	52	4
WBT2X12	12"	12 lbs	326	58	4
WBT2X16	16"	15 lbs	439	70	4
WBT2X18	18"	23 lbs	495	70	4
WBT2X20	20"	25 lbs	550	73	5
WBT2X22	22"	27 lbs	600	73	5
WBT2X24	24"	31 lbs	660	75	5
WBT2X26	26"	33 lbs	671	73	6
WBT2X28	28"	35 lbs	723	73	6
WBT2X30	30"	38 lbs	826	70	6
WBT2X32	32"	39 lbs	881	70	6



PART NUMBER	DESCRIPTION	WT. per box	QUANTITY per box
SPLICE KIT	3 piece staked bolt/washer and nut combination used to splice straight sections and fittings.	5 lbs	50 sets



PART NUMBER	DESCRIPTION	WT. per box	QUANTITY per box
WASHER SUPPORT	2" square washer that can be used to splice straight sections and fittings. This part can also be used as a hold down method.	6 lbs	50 each

WBT4X4	4"	12 lbs	205		4
WBT4X6	6"	13 lbs	310	49	5
WBT4X8	8"	15 lbs	416	78	6
WBT4X12	12"	23 lbs	621	78	6
WBT4X16	16"	27 lbs	837	108	7
WBT4X18	18"	29 lbs	942	116	7
WBT4X20	20"	31 lbs	1047	116	7
WBT4X22	22"	33 lbs	1152	116	8
WBT4X24	24"	35 lbs	1257	116	8
WBT4X28	28"	39 lbs	1460	108	



PART NUMBER	DESCRIPTION	WT. per box	QUANTITY per box
BAR SPLICE	Slotted bar 11-15/16" long used to splice straight sections and fittings	14 lbs	50 each



PART NUMBER	DESCRIPTION	WT. per box	QUANTITY per box
Corner Splice	Kit used to splice fittings. Each kit includes 2 90 degree splice bar and 8 sets of the splice kit	1 lbs	1 kit

WBT6X8	8"	23 lbs	623	116	6
WBT6X12	12"	27 lbs	931	123	6
WBT6X16	16"	31 lbs	1255	123	7
WBT6X18	18"	33 lbs	1413	127	7
WBT6X20	20"	35 lbs	1571	127	7
WBT6X22	22"	37 lbs	1728	127	8
WBT6X24	24"	39 lbs	1886	150	8



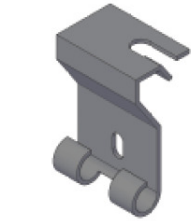
Diane Nelson
Phone #: 770-868-1572
Fax #: 770-868-1582
diane@superiorassociates.net
www.superiorassociates.com

WBT8X8	8"	27 lbs	835	116	8
WBT8X12	12"	31 lbs	1256	116	8
WBT8X16	16"	35 lbs	1677	116	9
WBT8X18	18"	37 lbs	1887	116	9
WBT8X20	20"	39 lbs	2098	116	9



7 Carpenter Drive
Salem, IL 62881
888 4WB TRAY
618 740 0801
www.wbtray.com

For shaped tray, add an 'S' as the suffix of the part number (i.e. WBT2x4S)



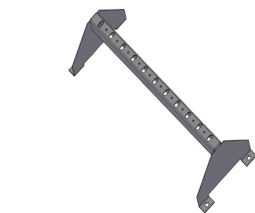
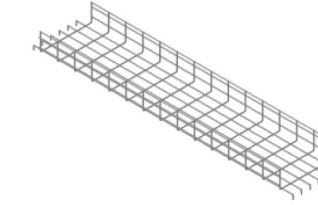
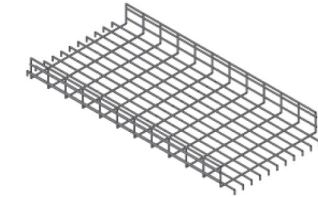
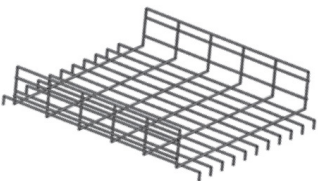
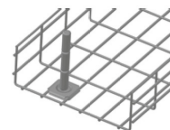
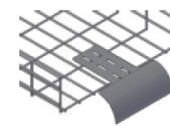
PART NUMBER	DESCRIPTION	WT. per pc.	QUANTITY per box
SHELF SUPT 4	Shelf/Wall support for 4" wide tray	0.4 lbs	1 each
SHELF SUPT 6	Shelf/Wall support for 6" wide tray	0.5 lbs	1 each
SHELF SUPT 8	Shelf/Wall support for 8" wide tray	0.6 lbs	1 each
SHELF SUPT 12	Shelf/Wall support for 12" wide tray	1.2 lbs	1 each
SHELF SUPT 16	Shelf/Wall support for 16" wide tray	1.7 lbs	1 each
SHELF SUPT 18	Shelf/Wall support for 18" wide tray	1.9 lbs	1 each
SHELF SUPT 20	Shelf/Wall support for 20" wide tray	2.6 lbs	1 each
SHELF SUPT 24	Shelf/Wall support for 24" wide tray	3.2 lbs	1 each

PART NUMBER	DESCRIPTION	WT. per pc.	QUANTITY per box
TRAP SUPT	Trapeze style side support. Hooks to the side of the tray. Suggest for tray sizes 16" wide & smaller	9 lbs	50pcs/box

PART NUMBER	DESCRIPTION	WT. per pc.	QUANTITY per box
CENTER SUPT 4	Center Support for 4" wide tray	1.6 lbs	1 each
CENTER SUPT 6	Center Support for 6" wide tray	1.8 lbs	1 each
CENTER SUPT 8	Center Support for 8" wide tray	2 lbs	1 each
CENTER SUPT 12	Center Support for 12" wide tray	2.7 lbs	1 each
CENTER SUPT 16	Center Support for 16" wide tray	3.3 lbs	1 each
CENTER SUPT 18	Center Support for 18" wide tray	3.4 lbs	1 each
CENTER SUPT 20	Center Support for 20" wide tray	3.8 lbs	1 each
CENTER SUPT 24	Center Support for 24" wide tray	4.4 lbs	1 each

PART NUMBER	DESCRIPTION	WT. per pc.	QUANTITY per box
CEILING SUPT 12	Profile style support for 12" wide tray & smaller	1.1 lbs	1 each
CEILING SUPT 16	Profile style support for 16" wide tray	1.5 lbs	1 each
CEILING SUPT 18	Profile style support for 18" wide tray	1.6 lbs	1 each
CEILING SUPT 20	Profile style support for 20" wide tray	1.9 lbs	1 each
CEILING SUPT 24	Profile style support for 24" wide tray	1.9 lbs	1 each

PART NUMBER	DESCRIPTION	WT. per pc.	QUANTITY per box
L BRACKET 4	Wall L bracket for 4" wide tray	0.7 lbs	1 each
L BRACKET 6	Wall L bracket for 6" wide tray	0.8 lbs	1 each
L BRACKET 8	Wall L bracket for 8" wide tray	0.9 lbs	1 each
L BRACKET 12	Wall L bracket for 12" wide tray	1.4 lbs	1 each
L BRACKET 16	Wall L bracket for 16" wide tray	1.5 lbs	1 each
L BRACKET 18	Wall L bracket for 18" wide tray	1.7 lbs	1 each
L BRACKET 20	Wall L bracket for 20" wide tray	2.1 lbs	1 each
L BRACKET 24	Wall L bracket for 24" wide tray	2.3 lbs	1 each



PART NUMBER	DESCRIPTION	WT. per pc.	QUANTITY per box
VERTICAL DOWN	Use the vertical down when dropping cables from the end or the side of tray.	1.5 lbs	1 each

PART NUMBER	DESCRIPTION	WT. per pc.	QUANTITY per box
CABLE GUIDE	The cable guide is used when routing/pulling cables through fittings while maintaining recommended cable radii	14 lbs	50 each

PART NUMBER	DESCRIPTION	WT. per pc.	QUANTITY per box
RACK ATTACHMENT	Attaches tray direction to the top of a standard rack	1	1 kit

PART NUMBER	DEPTH	WIDTH	WT. per pc.	FILL*	LOAD lbs/ft
WBT2X6X2	2	6	2.25 lbs	211	n/a
WBT2X6X4	2	6	4.5 lbs	211	n/a
WBT2X6X6	2	6	6.75 lbs	211	n/a
WBT2X12X2	2	12	3.25 lbs	419	65
WBT2X12X4	2	12	6.25 lbs	419	65
WBT2X12X6	2	12	9.5 lbs	419	58
WBT2X24X2	2	22	4.75 lbs	772	116
WBT2X24X4	2	22	9.5 lbs	772	115
WBT2X24X6	2	22	14.25 lbs	772	75
WBT4X6X2	4	6	2.75 lbs	421	49
WBT4X6X4	4	6	5.5 lbs	421	49
WBT4X6X6	4	6	8.25 lbs	421	49
WBT4X12X2	4	12	3.75 lbs	838	143
WBT4X12X4	4	12	7.5 lbs	838	143
WBT4X12X6	4	12	11.25 lbs	838	78
WBT4X24X2	4	22	5.5 lbs	1543	116
WBT4X24X4	4	22	11 lbs	1543	115
WBT4X24X6	4	22	16.5 lbs	1543	115
WBT6X6X2	6	6	3.5 lbs	632	n/a
WBT6X6X4	6	6	7 lbs	632	n/a
WBT6X6X6	6	6	10.5 lbs	632	n/a
WBT6X12X2	6	12	4.5 lbs	1256	157
WBT6X12X4	6	12	9 lbs	1256	157
WBT6X12X6	6	12	13.5 lbs	1256	123
WBT6X24X2	6	22	6.25 lbs	2315	151
WBT6X24X4	6	22	12.5 lbs	2315	151
WBT6X24X6	6	22	18.75 lbs	2315	150
WBT8X12X2	8	12	5.25 lbs	1684	150
WBT8X12X4	8	12	10.5 lbs	1684	150
WBT8X12X6	8	12	15.75 lbs	1684	116
WBT8X20X2	8	20	7 lbs	2813	150
WBT8X20X4	8	20	14 lbs	2813	150
WBT8X20X6	8	20	21 lbs	2813	116
WBT0x24x2	0	22	4 lbs	n/a	67

PART NUMBER	DESCRIPTION
WBUT4	Independent Underfloor support 4" high
WBUT6	Independent Underfloor support 6" high
WBUT8	Independent Underfloor support 8" high
WBUT10	Independent Underfloor support 10" high
WBUT12	Independent Underfloor support 12" high
WBUT14	Independent Underfloor support 14" high
WBUT16	Independent Underfloor support 16" high
WBUT18	Independent Underfloor support 18" high
WBUT20	Independent Underfloor support 20" high
WBUT22	Independent Underfloor support 22" high
WBUT24	Independent Underfloor support 24" high
WBUT26	Independent Underfloor support 26" high
WBUT28	Independent Underfloor support 28" high
WBUT30	Independent Underfloor support 30" high

Additional items, custom parts and finish available. Please contact the factory with any questions. Phone#: 888 492 8729 e-mail: gary@wbtray.com